

A modern interior space featuring a wooden cabinet with a green melamine front panel. A white chair is visible on the right. In the foreground, a white table holds an open book with a colorful abstract image. The background is a textured concrete wall.

# D&RHenderson

Independent | Sustainable | Competitive

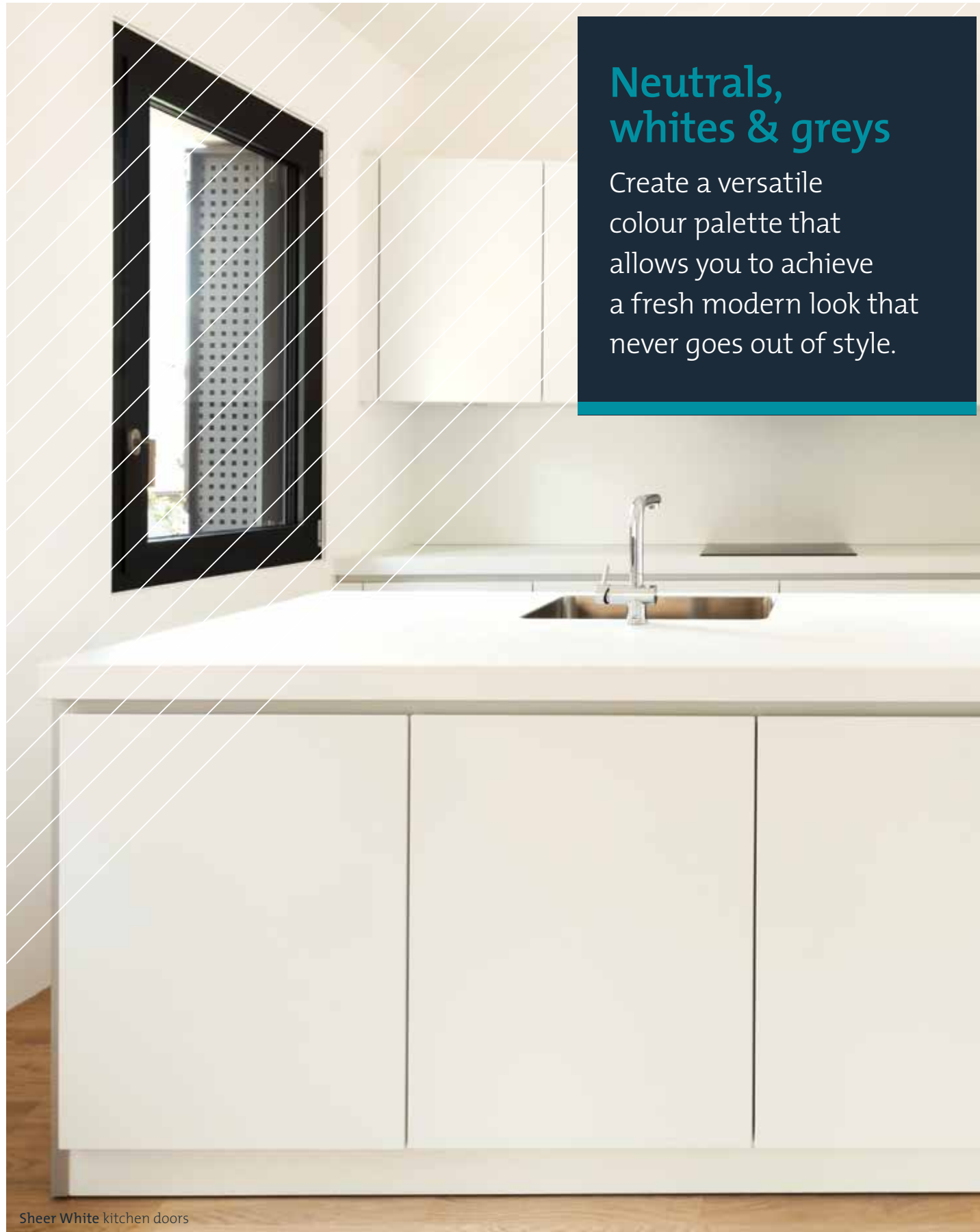
## Melamine

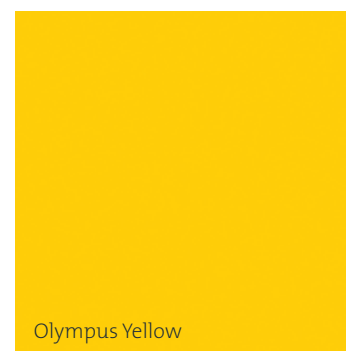
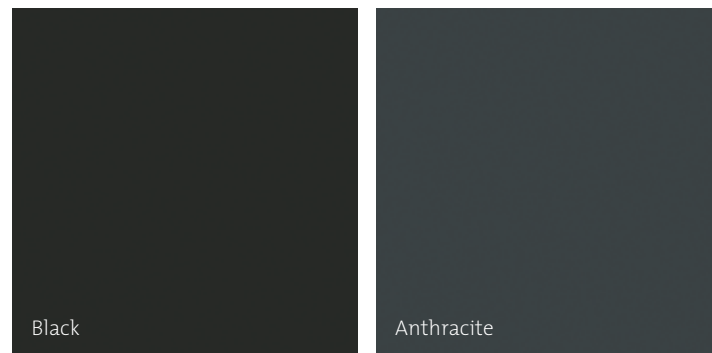
colour & design selection



## Neutrals, whites & greys

Create a versatile  
colour palette that  
allows you to achieve  
a fresh modern look that  
never goes out of style.





## D&R Henderson Melamine

### Statement colours

Make a statement with dark panels, or brightly coloured features. Application options are endless, and complement your unique style.





Flax Teak



Cascade



Cab Weave Honey



Oyster Micraline



Mushroom Micraline



Liquorice Micraline

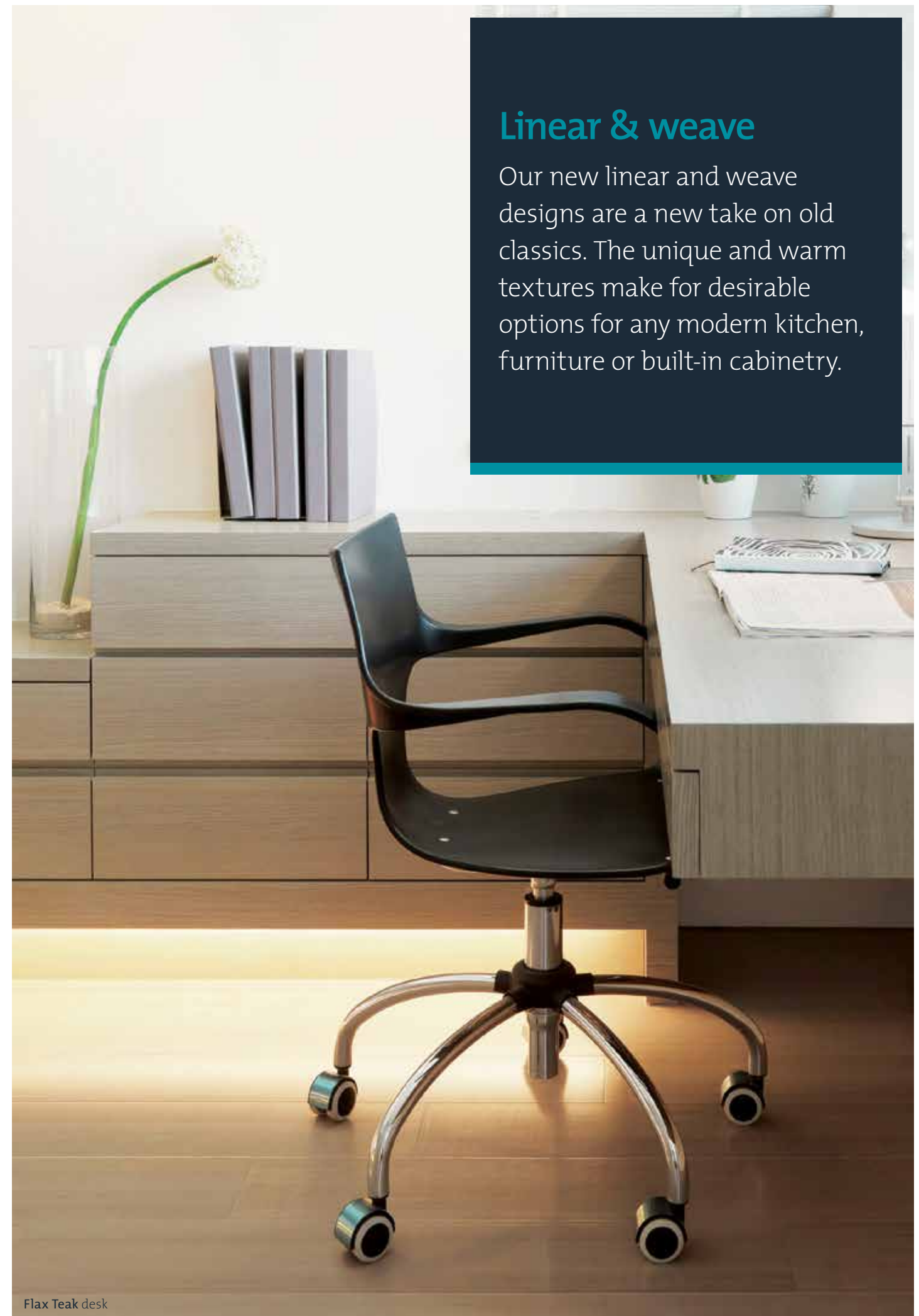


Cab Weave Charcoal

D&R Henderson Melamine

## Linear & weave

Our new linear and weave designs are a new take on old classics. The unique and warm textures make for desirable options for any modern kitchen, furniture or built-in cabinetry.





Frosty Oak desk



Frosty Oak



Charred Oak



Banstead Oak



Vanilla Oak



Limed Oak



Young Birch



Light Pear



Rotary Birch



Sonova Beech



Refined Beech



White Poplar



Cherry



Western Walnut



Cherry Latte



Wenge



Espresso Walnut



Chocolate Apple



New Mahogany

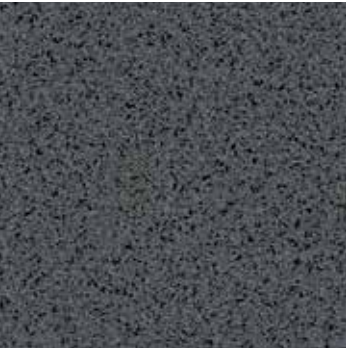


Charred Oak kitchen joinery

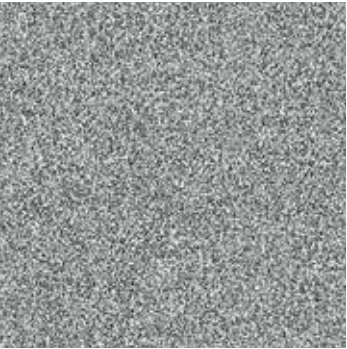
## Wood grains

Modern wood grain designs provide texture & style in commercial and residential settings.





Riverstone



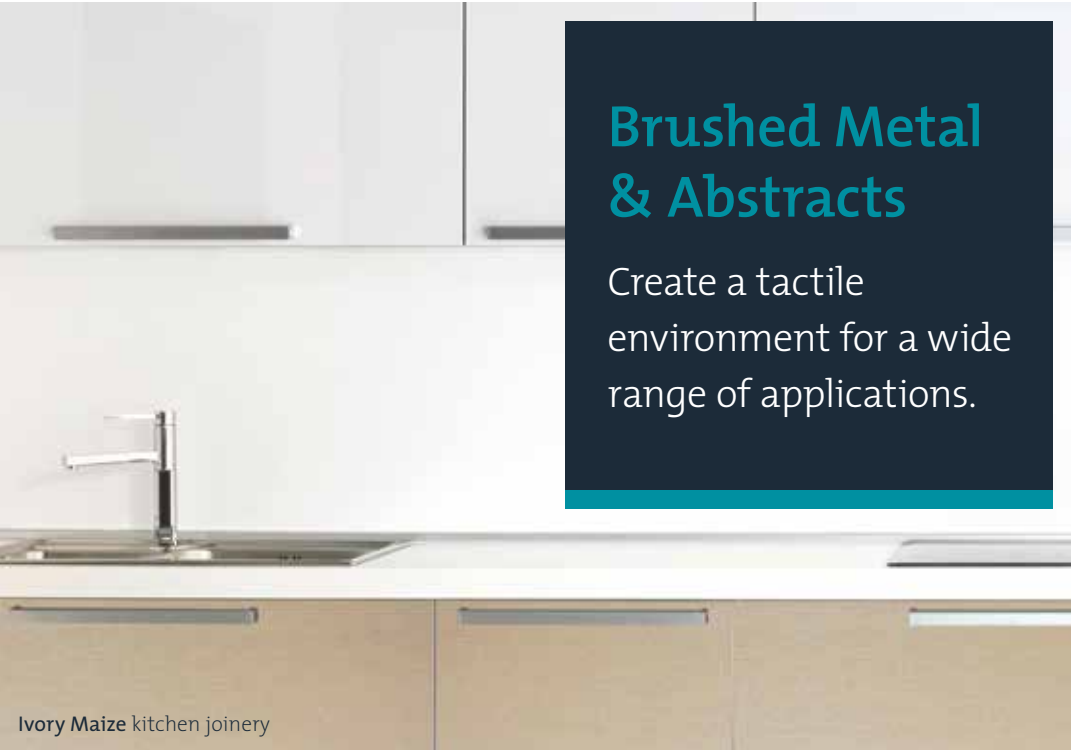
Pepper Grain



Blue Haze



Ocean Spray



Aluminium Maize



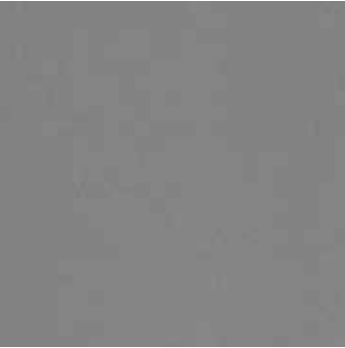
Stainless Maize



Ivory Maize



Ocean Spray



Brushed Graphite



Brushed Aluminium



Cab Steel

# D&R Henderson Melamine

World-class quality in a beautiful and sustainable product.

## Kitchen availability guide

DESIGN/COLOUR NAME	MR-MDF	MR-PB	
	2400x1200 16mm	2400x1200 16mm	2400x1800 16mm
Aluminium Maize	■	■	■
Antique Cream	■	■	■
Black	■	■	■
Brushed Aluminium	■	■	■
Brushed Graphite	■	■	■
Cab Steel	■	■	■
Cab Weave Charcoal	■	■	■
Cab Weave Honey	■	■	■
Cascade	■	■	■
Cherry	■	■	■
Charred Oak	■	■	■
Flax Teak	■	■	■
Florentine Grey	■	■	■
Fossick	■	■	■
Frosty Oak	■	■	■
Graceland Blue	■	■	■
Ivory Maize	■	■	■
Light Yellow	■	■	■
Liquorice Micraline	■	■	■
Mushroom Micraline	■	■	■
New Mahogany	■	■	■
New Oyster	■	■	■
Oyster Micraline	■	■	■
Olympus Yellow (only in MR-MDF)	■	■	■
Porcelain	■	■	■
Sheer White (Ultra White)	■	■	■
Sonova Beech	■	■	■
Sovereign Grey	■	■	■
Stainless Maize	■	■	■
Terra Red	■	■	■
True Antique White	■	■	■
Wenge	■	■	■

### Key:

- Product available
- Product not available
- Paper available – subject to minimum volumes and board availability

## Commercial availability guide

DESIGN/COLOUR NAME	STD-PB		
	3600x1800 16mm	3600x1800 18mm	3600x1800 25mm
Anthracite	■	■	■
Antique Cream	■	■	■
Banstead Oak	■	■	■
Black	■	■	■
Blue Haze	■	■	■
Charred Oak	■	■	■
Cherry	■	■	■
Cherry Latte	■	■	■
Chocolate Apple	■	■	■
Espresso Walnut	■	■	■
Flax Teak (also in 2400 x 1800)	■	■	■
Florentine Grey	■	■	■
Frosty Oak	■	■	■
Graceland Blue	■	■	■
Honey Oats	■	■	■
Light Pear	■	■	■
Limed Oak	■	■	■
Ocean Spray	■	■	■
Pepper Grain	■	■	■
Porcelain	■	■	■
Refined Beech	■	■	■
Riverstone	■	■	■
Rotary Birch	■	■	■
Saxon Grey	■	■	■
Sheer White (Ultra White)	■	■	■
Sonova Beech	■	■	■
Teal Blue	■	■	■
Vanilla Oak	■	■	■
Western Walnut	■	■	■
White Poplar (also in 2400 x 1800)	■	■	■
Young Birch	■	■	■

**Edgetape available for all colours and designs in the following sizes:**  
29 x 2 mm / 22 x 2 mm / 22 x 1 mm

**Plate Finishes:** CTX, Euro Linear, Decor and Satin (Default CTX).

MDF & MR-MDF substrate & other sizes available upon request.

E-Zero (EO) and Super E-Zero (SE0) substrate available upon request.

## Why choose D&R Henderson?

### Independent

Privately owned and operated.

### Sustainable

All boards contain post-consumer recycled material, all wood fibre is sustainably sourced.

Customer post-consumer wood waste can be recycled at the D&R Henderson Benalla facility.

Our Product Stewardship program enables products to be returned to D&R Henderson Benalla at the end of the life cycle for reprocessing.

100% recycled particle board products also available.

### Competitive

D&R Henderson is highly competitive and provides fast lead times on the melamine range.

### Australian owned & operated

D&R Henderson is the only Australian owned particleboard manufacturer in Australia.

### Low emission – moisture resistant

MR-E0 (MF3) – all boards made from low emission moisture resistant resin.

### Green Star credit compliance

Indoor Environment Quality

- Formaldehyde Minimisation
- F4 Star under JIS

### Materials

- Sustainable post-consumer re-used timber
- Timber from re-used source



Our brochures are printed on paper from responsible sources.

Contact our friendly customer service team for more information.

 1300 733 266

[drhenderson.com.au](http://drhenderson.com.au)