

**Decoline®**

Commercial Selection



**D&RHenderson** Pty Limited



www.drhenderson.com.au

## Decoline HPL

D&R Henderson now offer a Decoline HPL range in a selection of colours to complement the Commercial offering.

Decoline HPL is designed for interior applications where decorative surfaces require resistance to wear, impact and stains. Horizontal applications include surfaces of counter tops, bench tops, table tops, domestic and commercial furniture and store fixtures. Vertical applications include wall panels, cabinets, toilet partitions, elevator interiors and counters.

HPL is manufactured by placing a layer of overlay paper on top of a melamine resin impregnated pattern paper and layers of phenolic resin impregnated kraft paper. The combination of sheets is then pressed at a very high pressure and temperature to form a sheet of high pressure laminate.

Most colours are available in post forming grade in 0.8mm thickness. (Check product offering for details)



## Decoline

Decoline is the name given to our decorative line of Low Pressure Melamine products. Decoline boards are widely used in commercial furniture, office fit outs, shopfitting, wall units, shelving and wall linings.

The manufacture of our Decoline board is carried out under controlled conditions and complies with Australian and industry specific standards. The company is a prominent member of the AWP (Australian Wood Panels Association) and has attained JAS-ANZ and JIS certification to ensure only the highest quality product for our customers.

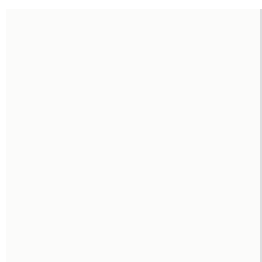
Decoline boards have reliable structural properties including a surface that is durable, stain resistant and easy to clean.



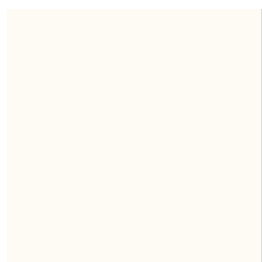




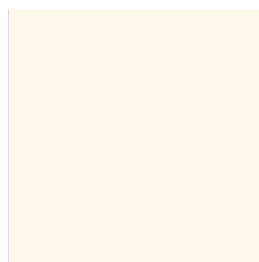
Sheer White



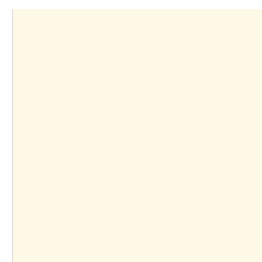
White



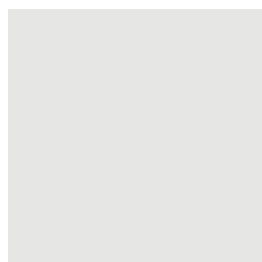
Porcelain



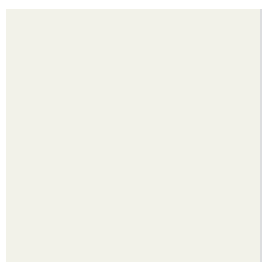
True Antique White



Antique Cream



Florentine Grey



Saxon Grey



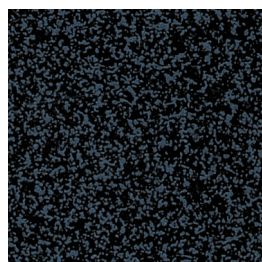
Storm Grey



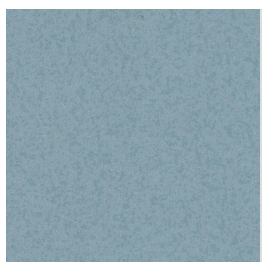
Fossick



Anthracite



Bluestone



Ocean Spray



Graceland Red



Graceland Blue



Olympus Yellow



Australian Ash



Bonde Beech



Refined Beech



Sonova Beech



Apple Tree



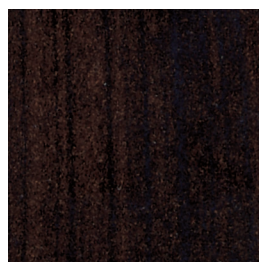
Dark Walnut



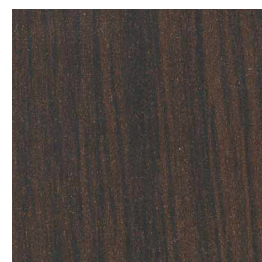
Wenge



Espresso Walnut

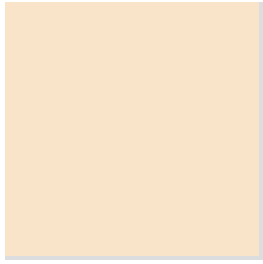


Chocolate Apple

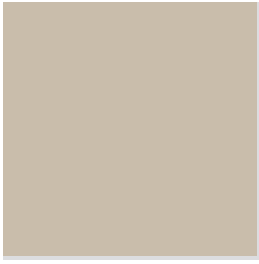


Chocolate Oak

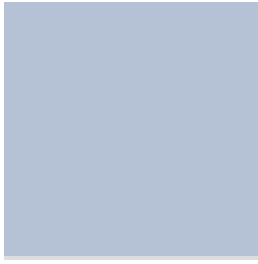




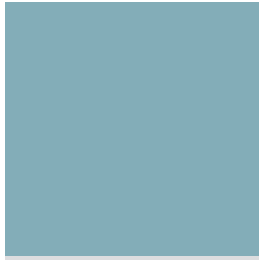
Light Yellow



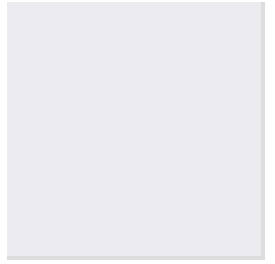
New Oyster



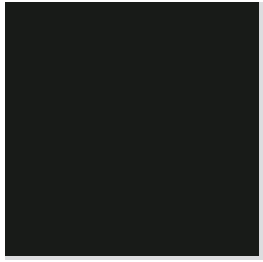
Teal Blue



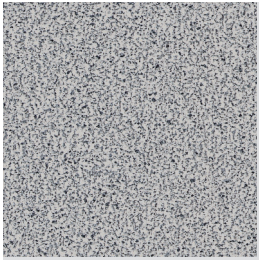
Ocean



Sovereign Grey



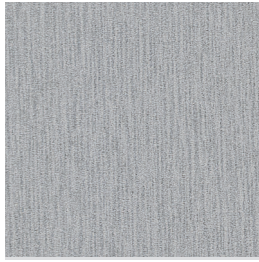
Black



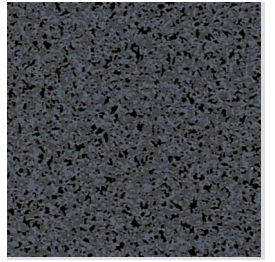
Mouse Matrix



Concrete Haze



Brushed Aluminium



Riverstone



White Poplar



Silk Maple



Tea Tree



Rotary Birch



Young Birch



Cherry



Cherry Latte



Vanilla Oak



Zebrano



Jarrah

**Colours:** The colours and patterns shown in this brochure are reproduced as faithfully as the printing process allows. Some inaccuracies may occur however, and it is strongly recommended that a sample of the actual colour/pattern/woodgrain for both melamine and HPL be obtained before placing your order.



Available in 7 working days.



A commercial HPL match available.





# Decoline Commercial Selection Offering

When you order a core range Decoline colour marked with **7** then the product can be on its way to you within 7 working days. All other colours will be available within 10 working days (plus shipping for certain areas). There are 45 colours available in the range in a CTX finish.

	Core Range (CTX Finish)	Extended Range (CTX Finish)
<b>Standard Lead Time</b>	<b>7 days + transport</b>	<b>10 days + transport</b>
<b>Standard Particleboard (LFE E1)</b>	3600 x 1800 x 18 3600 x 1800 x 25 3600 x 1800 x 33*	3600 x 1800 x 16 3600 x 1800 x 18 3600 x 1800 x 25 3600 x 1800 x 33
<b>Standard MDF</b>		3600 x 1800 x 16 3600 x 1800 x 18 3600 x 1800 x 25 3600 x 1800 x 32
<b>E0 Ultra Low Formaldehyde Emission Particleboard (MF3)</b>		3600 x 1800 x 18 3600 x 1800 x 25 3600 x 1800 x 33

\* Available in selected colours only

Loose sheet orders (core & extended range) available upon request.

2400 x 1800 x 16/18/25/33mm available in standard particleboard and standard MDF upon request.

Super E0 (F4 Star to JIS A 5908) boards are also available upon request.

For large orders (ie full semi's) extended lead times may apply.

Standard lead times can be subject to change – terms and conditions apply. Please refer to our website for further information.

EDGING	Core Range	Extended Range
<b>2mm Edging (100m Rolls)</b>	22mm 29mm 38mm	22mm 29mm (minimum qty may apply) 38mm (minimum qty may apply)
<b>Melamine Edging</b>	22mm (Pre-Glued) 50m roll 22mm (Un-Glued) 100m roll	22mm (Pre-Glued) 50m roll 22mm (Un-Glued) 100m roll

## HPL Commercial Matches (Post Forming Grade)

Size	3660 x 1525 (Velvet Finish)	3660 x 1240 (Velvet Finish)
<b>Standard Lead Time</b>	<b>3 days + transport</b>	
Black	●	●
Bonde Beech	●	
Dark Walnut	●	
Florentine Grey	●	●
Graceland Blue		●
Mouse Matrix +	●	
Olympus Yellow		●
Porcelain	●	
Riverstone	●	

All colours available in 0.8mm thickness

+ Available only in Standard Grade (non post forming)

Size	3660 x 1525 (Velvet Finish)	3660 x 1240 (Velvet Finish)
<b>Standard Lead Time</b>	<b>3 days + transport</b>	
Sheer White	●	
Sovereign Grey		●
Storm Grey		●
Teal Blue		●
True Antique White	●	
White	●	
Young Birch	●	





# Eco-Friendly Commitment



A key focus of D&R Henderson has always been to manage its activities with a strong commitment to the environment. Over the company's history D&R Henderson has implemented a number of significant practices to ensure this commitment is met.

## Plantation Pine

More than 95% of the wood used in our sawmill and particleboard plants is from plantation pine, a sustainable renewable source. Approximately 70% of this wood is sourced from plantations which are Forest Stewardship Council (FSC) certified; ensuring environmentally responsible forest management practices have been implemented.

## Recycled Sawmill Residues

About 75% of our wood feed stock is pre-consumer recycled content generated by other sawmills' wood residues. This by-product of the timber milling process is fed into our manufacturing systems to produce a higher end-product.

## Wood Waste Recycling Facility

Located in metro Melbourne and with co-operative support from EcoRecycle Victoria, D&R Henderson commissioned a wood waste recycling facility as part of its product stewardship commitment. This is the first step in turning widespread waste material back into processed wood panels. Wood waste is cleaned of contaminants via multiple separation stages to ensure quality feedstock is maintained. Post-consumer recycled content makes up approximately 10% of our board products.

D&R Henderson is the first manufacturer in Australia to develop this technology and divert general and furniture grade wood waste, once destined for landfill, back into the manufacturing process; pioneering the way forward in an effort to close the recycling loop.

## Granulate Recycling

Off-cuts from our group operations are processed into a granulated form and back-loaded to our particleboard plant in Benalla to be used as raw material. This ensures that all waste generated from this process is recycled internally and not disposed of as landfill.

## Wood Dust To Energy

All wood dust generated during the manufacturing process in Benalla is diverted to our heating systems and turned into energy.

## Environmentally Responsible

D & R Henderson has a strong commitment towards an environmental responsibility and supports sustainable management of plantation forestry by ensuring a minimum volume of wood content is sourced from FSC certified plantation pine.

### Wood content summary

- 75% Pre-consumer recycled content
- 10% Post-consumer recycled content
- 70% Wood fibre sourced from FSC accredited plantations

Please visit the website for more details regarding our environmentally friendly initiatives.

## Ultra Low Emission (EO) Particleboard

To meet the increasing demand for more environmentally friendly building products, D&R Henderson has introduced eco-friendly Ultra Low Emission (EO) decorative wood panels to the Australian market.

Our low emission particleboard is recognised by Eco-Specifier and is suitable for use in all Green Star Rated architectural designs to enhance the overall environmental performance of building and construction. Super EO (F4 Star) boards are also available upon request to achieve an even higher Green Star rating for your fit-out.



www.drhenderson.com.au

#### National Customer Service Centre

Ph: 1300 733 266  
Fax: 1300 733 264  
customer.service@drhenderson.com.au

#### Head Office

106-108 Ham Street (PO Box 199)  
WINDSOR NSW 2756  
Ph: (02) 4577 4033 · Fax: (02) 4577 4759

#### Brisbane

Sales and Distribution  
26 Spine Street, SUMNER PARK QLD 4074

#### Newcastle

Sales and Distribution  
53 Stenhouse Drive, CAMERON PARK NSW 2285

#### Sydney

Sales and Distribution  
7 Ormsby Place  
WETHERILL PARK NSW 2164

#### Nowra

Sales and Distribution  
Unit 2, 1 Bellevue Street  
SOUTH NOWRA NSW 2540

#### Melbourne

Manufacturing, Sales and Distribution  
82-88 Maffra Street  
COOLAROO VIC 3048

#### Benalla (Monsbent P/L)

Manufacturing and Distribution  
Yarrowonga Road  
BENALLA VIC 3672

#### Benalla (Sawmill)

Manufacturing and Distribution  
Yarrowonga Road  
BENALLA VIC 3672

#### Adelaide

Sales and Distribution  
32 South Terrace  
WINGFIELD SA 5013

## Decorative Wood Panel Products

**D&R Henderson** Pty Limited

D&R Henderson is proud to be a 100% Australian owned private company, offering Australian made products Australia wide and throughout the Asia-Pacific region.

### SUBSTRATE PROPERTIES

(Typical physical properties when tested to AS/NZS 1859.1)

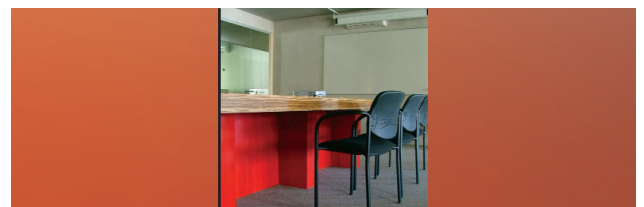
	UNIT	Standard Particleboard				EO Standard Particleboard (MF3)	
		16mm	18mm	25mm	33mm	18mm	25mm
Moisture Content	%	6.5	6.5	6.5	6.5	6.5	6.5
Board Density	Kg/m <sup>3</sup>	650	650	650	650	650	650
Formaldehyde Emissions	Mg/L	<1.5	<1.5	<1.5	<1.5	<0.5	<0.5
Internal Bond	N/mm <sup>2</sup>	0.45	0.45	0.4	0.4	0.45	0.45
Bending Strength (MOR)	N/mm <sup>2</sup>	15	15	14	14	14	14
Bending Stiffness (MOE)	N/mm <sup>2</sup>	2500	2500	2500	2500	2500	2500
Screw Holding Face	N	500	500	500	500	500	500
Screw Holding Edge	N	500	500	500	500	500	500
24hr Thickness Swell	%	14	14	14	14	14	14
Weight per m <sup>2</sup>	Kg	10.4	11.7	16.25	21.45	11.7	16.25

### FIRE HAZARD INDICES

(Typical values when tested to AS/NZS 1530.3)

Indices	Result	Range
Ignitability	13-14	0-20
Spread Of Flame	6	0-10
Heat Evolved	6-7	0-10
Smoke Developed	3	0-10

**Decoline**®



Decoline™ is a registered trademark of D&R Henderson Pty Ltd.