

---

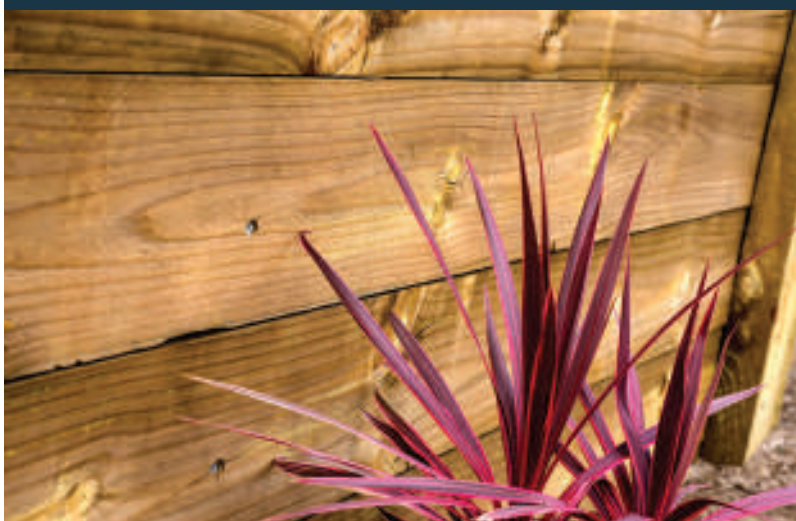
# TIMBERLINK. MADE OF TASMANIA.®

---

---

## Tasmanian Sleepers

---



Certified Tasmanian plantation pine

Suitable for non-structural landscaping

---

Easy to cut, paint or stain

---

Arsenic-free – can be used for veggie gardens and play areas

---

Made in Tasmania from Tasmanian plantation pine

---

**TIMBERLINK**®  
Australia & New Zealand

# TIMBERLINK. MADE OF TASMANIA.

Timberlink Tasmanian Sleepers are the cost-effective way to give your garden a fresh new look. Our non-arsenic treatment, makes them perfect for all your non-structural landscaping projects such as garden edging, raised veggie beds and sandpits.

To keep your sleeper project looking good and lasting for longer:

## Use Hot-dipped Galvanized Steel Fixings

Always use hot dipped zinc galvanised steel or stainless-steel fixings when building outdoors to prevent rust.

## Fix your Sleepers into Place Well

Sleepers are treated then dried naturally, so they can move while acclimatising. To prevent this, use fixings suitable for holding sleepers in place (bolts are great) and fix to support posts at regular intervals.

## Reseal Cut-ends

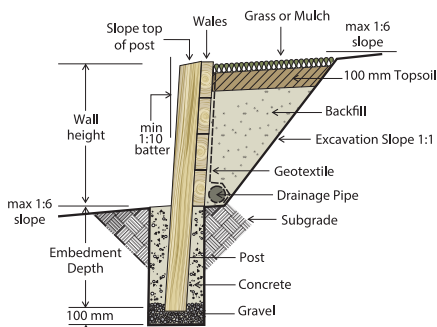
When you cut a piece of outdoor treated timber you break open the protective treatment envelope. To reseal the timber, apply an outdoor resealing product like Ecoséal® or Enseal® to any cut-end, available from your timber store. As an extra precaution, avoid placing cut-ends into the ground.

## Apply a Finish

Protect your outdoor timber from weathering by applying a good quality finish like a paint or stain to your project.

## Recommended Garden Wall Construction

As a non-structural product, sleepers are most effective for walls no more than 1000mm high. Drainage should be provided behind walls more than 400 mm high to prevent the build-up of ground water. We also recommend installing some geotextile between the sleepers and backfill and between the drainage pipe and the backfill.



### Checklist for a longer lasting sleeper wall:

- Sleepers
- Posts
- Geotextile (or other lining)
- Concrete
- Drainage piping (for walls higher than 400mm)
- Gravel

Visit our website for more info.